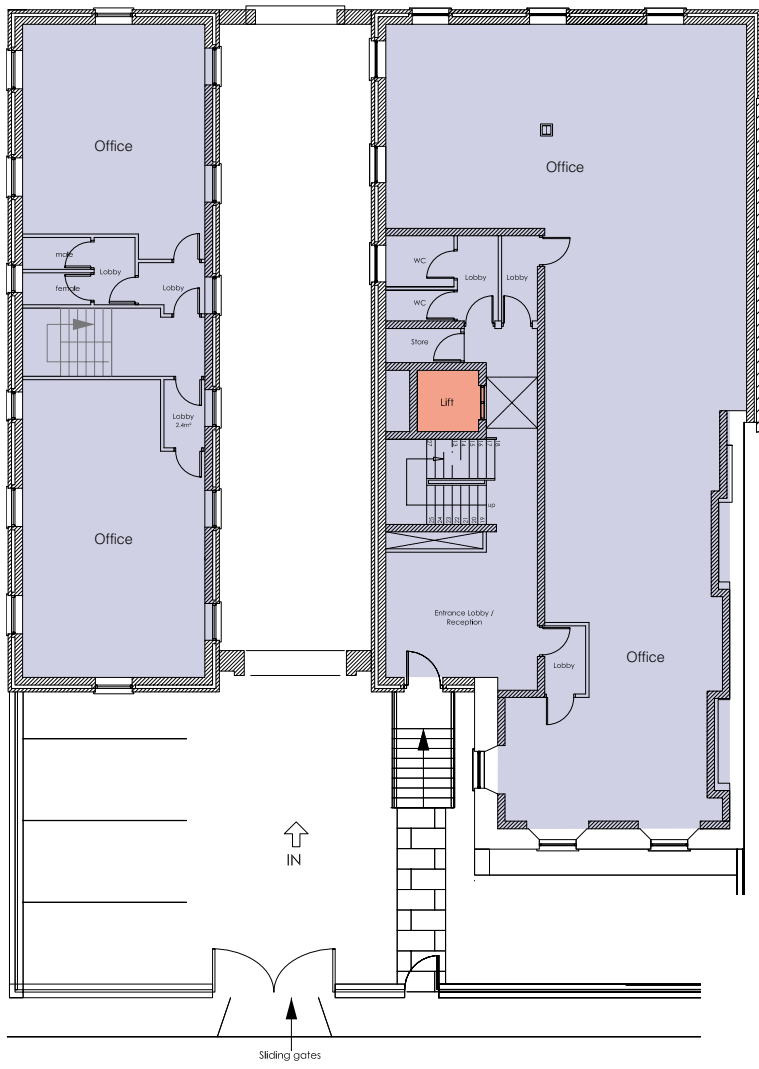
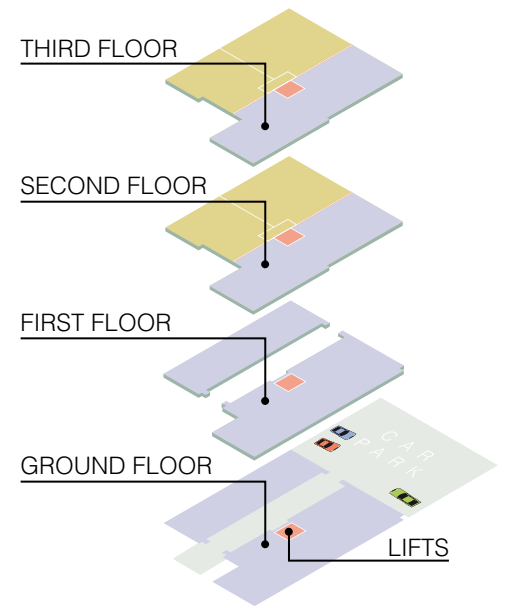


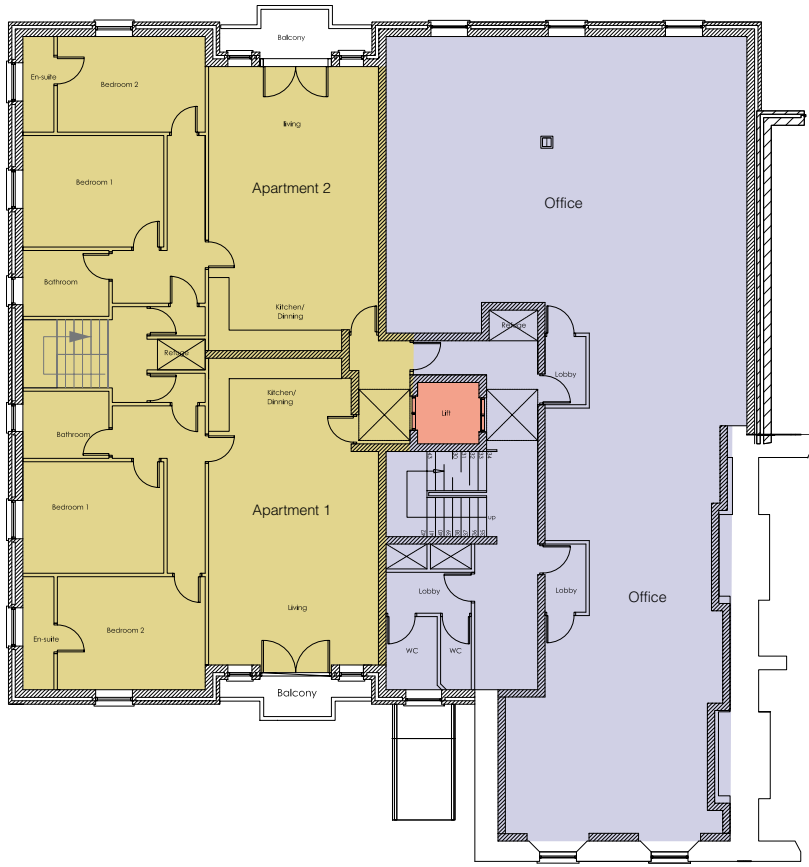
**Ground Floor Offices**  
 Left of the Arch Circa 1,000 Sq Feet  
 Right of the Arch 2,070 Sq Feet



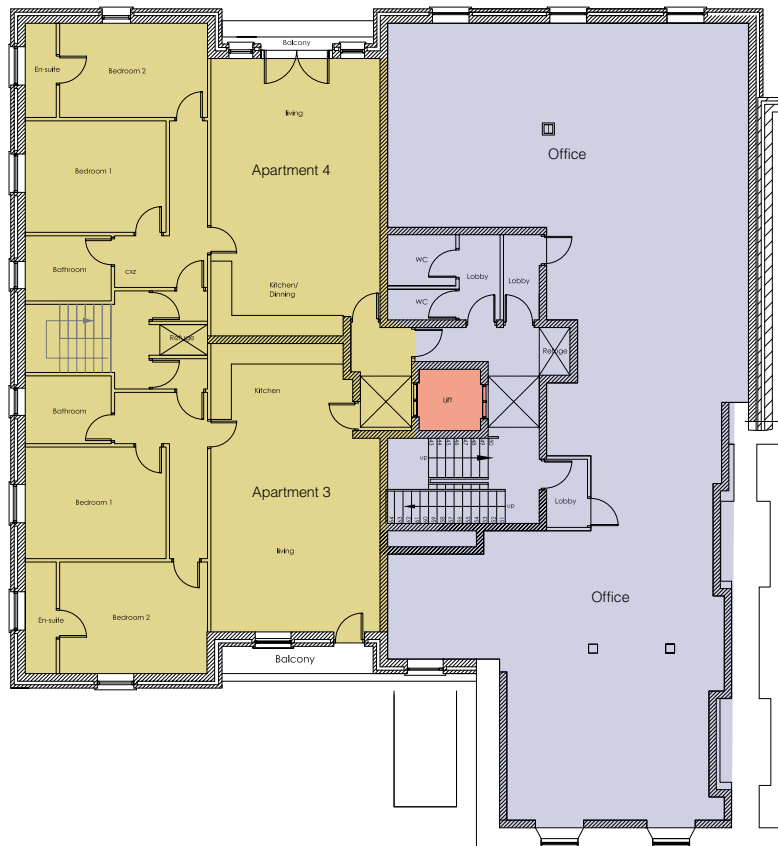
**First Floor Offices**  
 Left of the Arch Circa 1,000 Sq Feet  
 Right of the Arch 2,150 Sq Feet

● OFFICES ● APARTMENTS ● LIFTS





Second Floor Offices  
2,150 Sq Feet



Third Floor Offices  
2,150 Sq Feet  
Potential Mezzanine on Third Floor 650 Sq Feet

All Four Apartments Circa 1,000 Sq Feet

## Professional Team

- Developer** Baracca Limited
- Portella Developments Limited **Builder**
- Architect** John Hodgins Architects
- Bernard J Burke & Associates **Engineer**

For further information please contact: **T** 01 2810931 **M** 086 2253377